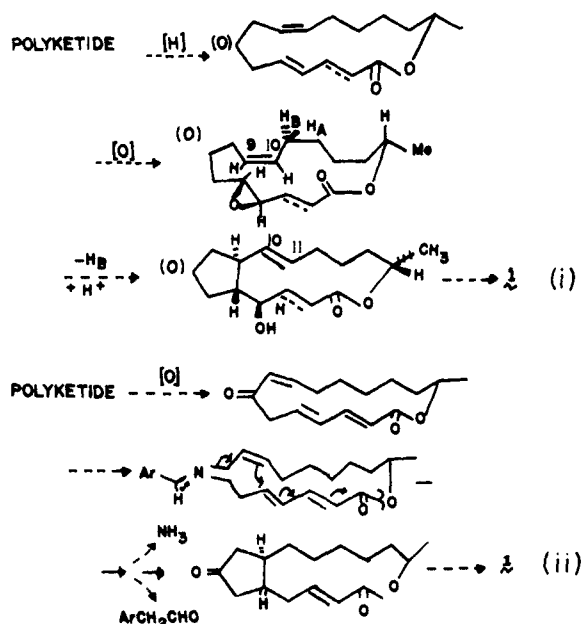


- (15) The calculated intensity ratio of $(M + 2)/(M + 4)$ of **3** if these oxygens came from two O_2 molecules is 2.63 (found 2.39), whereas, if from one O_2 molecule, it is ≤ 0.07 .
- (16) For example, in our working hypothesis i for ring formation, the C-4 hydroxyl would be a necessary result, but not the C-7 hydroxyl; in the alternative hypothesis ii, the C-7 hydroxyl could be a necessary result, but not the C-4



hydroxyl; in the proton-initiated analogue of hypothesis i, neither the C-4 nor C-7 hydroxyl would be a necessary result.

- (17) O. Hayaishi, "Molecular Mechanisms of Oxygen Activation", Academic Press, New York, N.Y., 1974, pp 48-51.

Clayton T. Mabuni, Luigi Garlaschelli
Robert A. Ellison, C. Richard Hutchinson*
School of Pharmacy, University of Wisconsin
Madison, Wisconsin 53706
 Received July 15, 1977

A Nonbleachable Rhodopsin Analogue Formed from 11,12-Dihydroretinal

Sir:

It is now commonly accepted¹ that the chromophore of the visual pigment rhodopsin consists of the protonated Schiff base² of 11-*cis*-retinal (**1**) bound to an ϵ -amino group of lysine³ of opsin, and that light triggers a series of reactions the terminal products of which are *all-trans*-retinal and opsin. Although the detection of the initial photolysis product, bathorhodopsin,⁴ and the room temperature⁵ and low temperature measurements⁶ of bleaching have been achieved, the nature of complex transformations and spectral changes are largely unsolved and remain to be the central problems in understanding the visual process on a chemical basis. A major factor which renders studies of rhodopsin difficult is its great lability toward light and heat. In conjunction with our studies on model retinals and rhodopsins formed therefrom,⁷ we report the preparation of the first nonbleaching rhodopsin and some spectral data which have direct bearing in clarifying the chemistry of rhodopsin.

The synthesized chromophore was *all-trans*-11,12-dihydroretinal (**2**), which, in view of the flexibility around the C₁₁-C₁₂ bond, could conceivably bind to opsin; this was found to be the case. This chromophore is pertinent since (i) there is no *cis*/*trans* isomerism around the 11-12 bond and hence the rhodopsin analogue would be "nonbleachable"; (ii) owing to the separation of the chromophore into triene and enal moieties, spectroscopic properties of the pigment would contribute to clarifying the cause of the enigmatic red shift accompanying its formation.

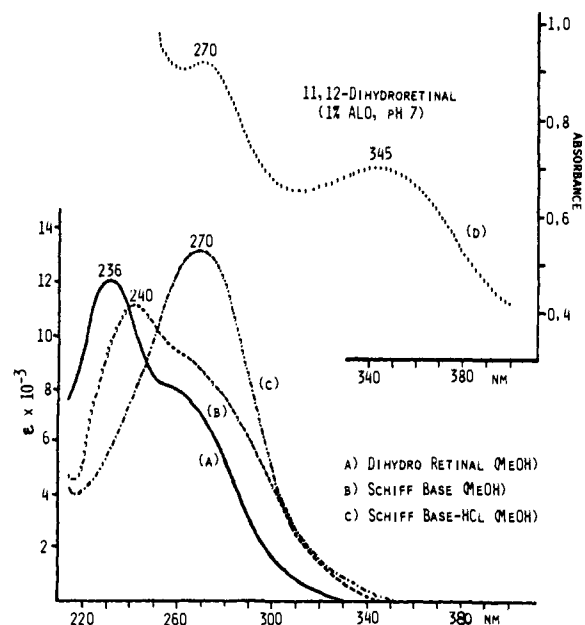


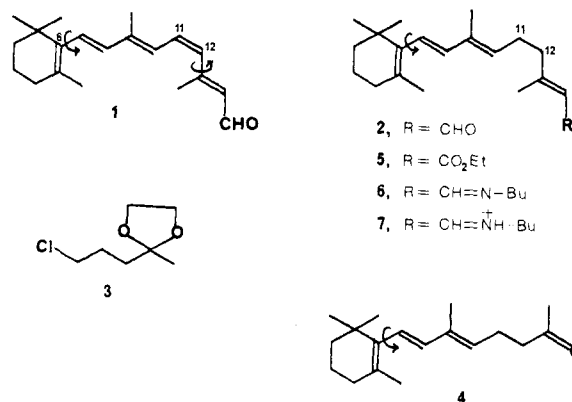
Figure 1. Absorption spectra: Curve a: aldehyde **2** in methanol; curve b, Schiff base **6** in methanol; curve c, protonated Schiff base **7** in methanol; curve d, pigment from 11,12-dihydroretinal **2** and bovine opsin in ALO, pH 7.0.

Table I. Absorption Spectral Data of 11-*cis*-Retinal and Dihydroretinal

	Dihydroretinal, in MeOH	11- <i>cis</i> -Retinal, in EtOH
Aldehyde	236 (12 000), ^a 255 (8 000)	375 (20 000)
Schiff base with BuNH ₂	240 (11 000), ^b 255 (8 000)	350 (29 000) ^b
Schiff base-HCl	270 (13 000) ^c	440 (34 000) ^c
Pigment	345 (in ALO, pH 7.4)	500 (in ALO, pH 7.4) ^d

^a Maxima due to the enal chromophore are italicized. ^b Prepared by keeping the solution of aldehyde in neat amine over molecular sieves, -20°C , 12 h, under nitrogen in the dark, blowing off excess amine, and dissolving residue in MeOH—*strictly anhydrous conditions*. ^c Prepared by bubbling dry HCl gas into methanol solution of the Schiff base at -78°C , under argon in the dark. ^d Data for bovine opsin.

11,12-Dihydroretinal (**2**) was prepared by the Emmons reaction between the ethyl phosphonate reagent derived from the chloro ketal **3** and β -ionone. The ketal was hydrolyzed to the dihydro C₁₈ ketone **4** with 10% HCl/THF, and this was submitted to a second Emmons reaction with ethyl (2-carboethoxy)phosphonate to give the ethyl ester **5**, which was converted to the aldehyde by reduction with diisobutylaluminum



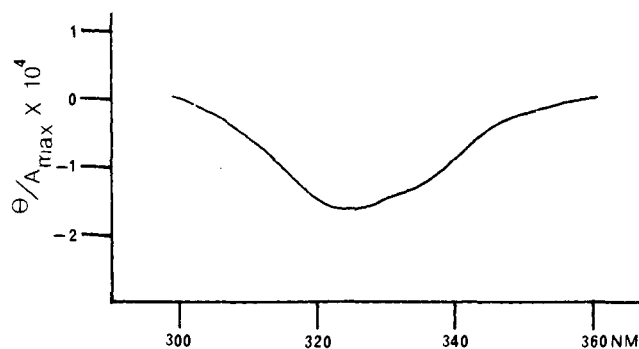


Figure 2. Circular dichroism curve of the pigment formed from 11,12-dihydroretinal **2** and bovine opsin in 1% ALO, pH 7.

hydride and subsequent oxidation with manganese dioxide. Separation by analytical HPLC, μ -Porasil, 10% ether in hexane, of the major isomer of the four-component mixture afforded pure *all-trans*-11,12-dihydroretinal (**2**) as characterized by ^1H NMR and ^{13}C NMR spectra. The chromophore is extremely unstable to traces of acid, base, or oxygen, and starts to deteriorate in a few days even when stored under nitrogen in the dark at -20°C . Because of its lability, the chromophore should be kept as ester **5**, and converted to the aldehyde and purified by HPLC immediately prior to usage, or stored at -65°C under argon.

Incubation of this dihydroretinal with bovine opsin suspension^{8,9} for 3 h at 37°C resulted in the appearance of a peak above 300 nm. The product was then purified by calcium phosphate chromatography, 1% Ammonyx LO.¹⁰ Control incubations employing only opsin or the chromophore gave no peaks above 300 nm and hence the new peak at 345 nm (Table I, Figure 1), which was accompanied by a CD extremum (Figure 2),¹¹ must be due to pigment formation. As expected, the UV spectrum was changed neither by exposure to room light for 10 h nor by direct irradiation for 0.5 h at room temperature with a 275-W sun lamp, and hence the pigment is "nonbleachable".

Absorption data for the dihydro chromophores **2**, **6**, **7**, and pigment are shown in Table I together with the corresponding data for 11-*cis*-retinal and rhodopsin (see also Figure 1). The spectra of the protonated Schiff bases (SBH^+) were measured in the "leveling" solvents ethanol and methanol because in these solvents the UV spectra of SBH^+ are insensitive to the method of preparation and the counteranion.¹²

One of the most important unsolved problems in vision chemistry concerns the large red shifts seen in the various rhodopsins, which absorb from 460 to 560 nm depending on the opsin,¹³ as opposed to the 440-nm value for SBH^+ (Table I). Numerous models and theoretical calculations have been forwarded to account for this. For example, the following electrostatic interactions between SBH^+ and the protein receptor site have been proposed: (i) between $\text{C}=\text{N}^+\text{H}$ and a nearby counterion;¹⁴ (ii) between $\text{C}=\text{N}^+\text{H}$, a nearby anion, and an additional anion close to the trimethylcyclohexene ring;¹⁵ (iii) between delocalized positive charge and nucleophilic groups along the side chain;¹⁶ (iv) between $\text{C}=\text{N}^+\text{H}$ and polarizable aromatic amino acid residues,¹⁷ etc.

However, it is remarkable that, in spite of the much shorter chromophore of dihydroretinal, the red shift between SBH^+ and pigment is *larger* than in the case of natural rhodopsin, i.e., 270 nm to 345 nm (or 8051 cm^{-1}) in contrast to 440 nm to 500 nm (or 2727 cm^{-1}) (Table I).

None of the above theories can satisfactorily rationalize this dramatic shift of 8051 cm^{-1} . It is quite possible that several effects are contributing simultaneously; it is also possible that the situation encountered in the dihydro pigment differs from normal rhodopsins. However, there undoubtedly exists within

the protein cavity an environment which induces the short dihydro- SBH^+ chromophore to undergo a further red shift of 75 nm. Preparations of other dihydroretinals,¹⁸ comparisons of spectral properties of their pigments formed from bovine and other opsins, and theoretical calculations based on the results¹⁹ will contribute to an understanding of this problem.²⁰

References and Notes

- (1) R. Hubbard and G. Wald, *J. Gen. Physiol.*, **36**, 269 (1952); G. Wald, *Science*, **162**, 230 (1968). Also see the following for a general account: *Acc. Chem. Res.*, **8**, 81-112 (1975).
- (2) F. D. Callino, *Nature*, **171**, 469 (1953); R. A. Morton and R. A. J. Pitt, *Biochem. J.*, **59**, 128 (1955); A. R. Oseroff and R. H. Callender, *Biochemistry*, **13**, 4243 (1974); A. Lewis, R. S. Fager, and E. W. Abrahamson, *J. Raman Spectrosc.*, **1**, 465 (1973); R. Mathies, A. R. Oseroff, and L. Stryer, *Proc. Natl. Acad. Sci. U.S.A.*, **73**, 1 (1976); R. H. Callender, A. Doukas, R. Crouch, and K. Nakanishi, *Biochemistry*, **15**, 1621 (1976).
- (3) D. Bownds, *Nature*, **216**, 1178 (1967); M. Akhtar, P. J. Blossie, and P. B. Dewhurst, *Biochem. J.*, **110**, 693 (1968); W. J. DeGrip, S. L. Bonting, and F. J. M. Daemen, *Biochem. Biophys. Acta*, **303**, 189 (1973); R. S. Fager, P. Sejnowski, and E. W. Abrahamson, *Biochem. Biophys. Res. Commun.*, **47**, 1244 (1973).
- (4) T. Yoshizawa and Y. Kito, *Ann. Rep. Sci. Works, Fac. Sci. Osaka Univ.*, **6**, 27 (1958).
- (5) G. E. Busch, M. L. Applebury, A. A. Lamola, and P. M. Rentzepis, *Proc. Natl. Acad. Sci. U.S.A.*, **69**, 2802 (1972); V. Sundstrom, P. M. Rentzepis, K. Peters, and M. L. Applebury, *Nature*, **267**, 645 (1977).
- (6) T. G. Ebrey and T. Yoshizawa, *Exp. Eye Res.*, **17**, 545 (1973); T. Yoshizawa and S. Horiuchi in "Biochemistry and Physiology of Visual Pigments," H. Dartnall, Ed., Springer-Verlag, Berlin, 1973, p 146.
- (7) W. K. Chan, K. Nakanishi, T. G. Ebrey, and B. Honig, *J. Am. Chem. Soc.*, **96**, 3642 (1974); K. Nakanishi, A. P. Yudd, R. K. Crouch, G. L. Olson, H.-C. Cheung, R. Govindjee, T. G. Ebrey, and D. J. Patel, *J. Am. Chem. Soc.*, **98**, 236 (1976), and references cited therein.
- (8) D. S. Papermaster and W. J. Dreyer, *Biochemistry*, **13**, 2438 (1974).
- (9) M. Zorn and S. Futterman, *J. Biol. Chem.*, **224**, 881 (1971).
- (10) H. Shichi, M. Lewis, F. Irreverre, and A. Stone, *J. Biol. Chem.*, **224**, 529 (1969); T. Ebrey, *Vision Res.*, **11**, 1007 (1971); M. L. Applebury, D. M. Zuckerman, A. A. Lamola, and T. M. Jovin, *Biochemistry*, **13**, 3448 (1974).
- (11) The optical activity can be accounted for if the negative charge were chirally situated with respect to the protonated Schiff base linkage. An additional factor which may be contributing to the optical activity is interaction between the enal chromophore and an aromatic amino acid moiety. With respect to the origin of the CD extrema of natural rhodopsin, an inherently chiral twist of the chromophore would probably be contributing as well.
- (12) P. E. Blatz, K. H. Johnson, J. H. Mohler, S. K. Al-Dilaimi, S. Dewhurst, and J. O. Erickson, *Photochem. Photobiol.*, **13**, 237 (1971); P. E. Blatz, J. H. Mohler, and H. V. Navangul, *Biochemistry*, **11**, 848 (1972).
- (13) B. Honig and T. G. Ebrey, *Ann. Rev. Biophys. Bioeng.*, **3**, 151 (1974).
- (14) P. E. Blatz, J. H. Mohler, and H. V. Navangul, *Biochemistry*, **11**, 848 (1972); H. Suzuki, T. Komatsu, and T. Kato, *J. Phys. Soc. (Jpn.)*, **34**, 156 (1973).
- (15) B. Honig, A. D. Greenberg, V. Dinur, and T. G. Ebrey, *Biochemistry*, **5**, 4593 (1976).
- (16) A. Kropp and R. Hubbard, *Ann. N.Y. Acad. Sci.*, **74**, 266 (1958); M.-J. Mantione and B. Pullman, *Int. J. Quantum Chem.*, **5**, 349 (1971); W. H. Waddell, A. M. Schaffer, and R. S. Becker, private communication.
- (17) C. S. Irving, G. W. Byers, and P. A. Leermakers, *Biochemistry*, **9**, 858 (1970).
- (18) Preparation of 7,8-, 9,10-, and 13,14-dihydroretinals and their pigments is in progress.
- (19) Calculations are being carried out by Professor B. Honig, Hebrew University, Israel.
- (20) The studies were supported by NIH Grants EY 01253, EY 01811, and a grant from Hoffmann-La Roche, Inc. We also acknowledge the help of Dr. F. Pilkiewicz and M. Pettei in the HPLC purification of the dihydroretinal.

Mary Ann Gawinowicz, Valeria Balogh-Nair
Jeffrey S. Sabol, Koji Nakanishi*

Department of Chemistry, Columbia University
New York, New York 10027

Received July 11, 1977

A Novel Phenol-Benzene C-C Coupling Reaction. An Acid-Catalyzed Reaction of *N*-Acyl-*O*-arylhydroxylamines with Benzenes

Sir:

The reaction of *N*-phenylhydroxylamine^{1,2} (**1**, X = NH; Y = OH), phenylhydrazine³ (**2**, X = NH; Y = NH₂), and related compounds³⁻⁵ with benzene give aminobiphenyls (eq 1) or their derivatives, and may involve a positively charged